



EXTENDER



EXTENDER

To extend the LiCS Indoor-system

The extender makes it possible to extend the maximum number of DALI operating devices in a standard DALI system.

The DALI extender can be installed and addressed instead of an operating device. Up to 64 DALI operating devices can be connected to the output of the extender, all of which react in the same way according to the input signal.



Extender

To extend the LiCS Indoor-system

The Extender for DALI systems can only be used in combination with a DALI controller. With DALI commands, the extender behaves like a DALI ballast.

Technical notes

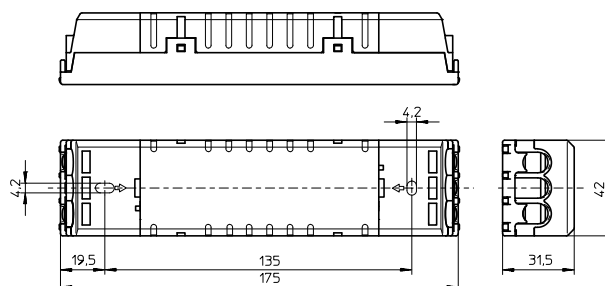
Configuration interface: via a DALI controller
 Ambient temperature t_a : 0 to 50 °C
 Max. casing temperature t_c : 65 °C
 Screw terminals: 0.75–2.5 mm²
 Degree of protection: IP20, Protection class II
 RFI-suppressed

Connections

Mains connection: 220–240 V AC/DC, 0/50–60 Hz
 Max. power consumption: 6.5 W
 For DALI signals in acc. with IEC 62386
 DALI current consumption: 2 mA
 1 DALI bus to 3 terminal pairs:
 current on the DALI bus max. 200mA
 (see the respective data sheet for current consumption values of the individual components)
 As a standard DALI bus is not SELV-compliant, the DALI cable must be rated for mains voltage.
 The DALI bus features reversible electronic overload and short-circuit protection.

Product guarantee

- 5 years
- The conditions for the Product Guarantee of the Vossloh-Schwabe Group shall apply as published on our homepage (www.vossloh-schwabe.com). We will be happy to send you these conditions upon request.



Extender Functions

Range extension from 300m by a further 300m. Connection of up to 64 ballasts to one DALI address (Broadcast Classic).

Extender

LiCS Indoor-system extension
 Dimensions (LxWxH): 175x42x31.5 mm
 Weight: 150 g

Ref. No.: 186194



The values contained in this datasheet can change due to technical innovations. Any such changes will be made without separate notification.

General safety information

- LiCS products may only be installed and commissioned by authorised and fully qualified staff.
- These instructions must be carefully read before installing and commissioning the system, as this is the only way to ensure safe and correct handling.
- Before any work is carried out on the equipment, it must be disconnected from the mains.
- All valid safety and accident-prevention regulations must be observed.
- The products should never be inexpertly opened as this poses lethal danger due to electrical shock. Repairs may only be undertaken by the manufacturer.
- On no account may the DALI control line be used to carry mains voltage or any other external voltage as this can destroy individual system components.
- Please refer to the manual at www.vossloh-schwabe.com for exact instructions on how to configure the system using the Extender.



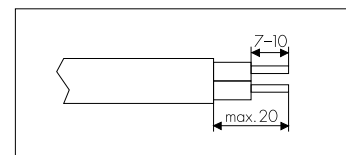
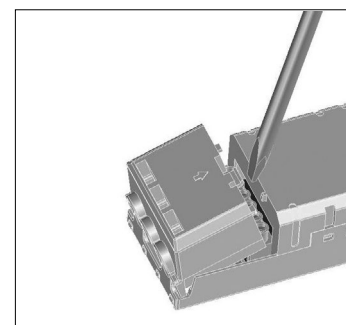
Extender

Installation

- Independent installation, e.g. in false ceilings
- Easy and time-saving installation due to end caps that snap into place without needing tools
- Clearance: min. 0.1 m to walls, ceilings, insulation and to other electronic devices; min. 0.25 m to sources of heat (e.g. lamps)
- Surface: solid, must not permit the Extender to sink into insulation material
- Fastening: using 4-mm screws

Installation instructions

- Cross-section of primary/secondary conductor: 0.75–2.5 mm²
- Cable preparation (see right)
- Screw terminals: max. tightening torque = 0.4 Nm
- Length of the secondary bus cable: max. 300 m
- A standard DALI bus only features basic insulation. All DALI cables must be rated for mains voltage. The power supply and the DALI line can be laid in a single cable (max. 100 m).
- Mains power cables and DALI cables should not be laid directly parallel to lamp cables (min. clearance = 0.25 m).
- Sensors must not be installed on the secondary side.



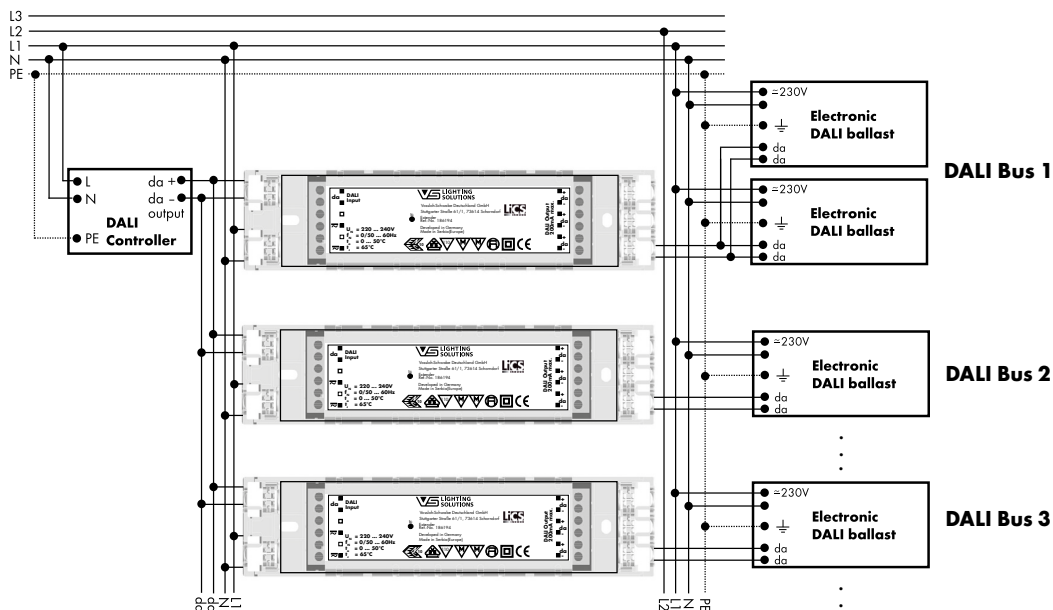
Additional information

- The Extender can only be operated if connected to a DALI control unit. Please refer to the respective operating instructions for information on the control unit.
- Three electrically connected DALI outputs make it easier to connect DALI ballasts.
- The outputs of several Extenders must not be connected with each other.
- To ensure safe operation of the Extender, the maximum casing temperature at the measuring point (t_c) must not be exceeded.
- When using the Extender, the total number of 64 DALI addresses within the system may not be exceeded.
- The range extension achievable with the Extender only applies in connection with VS ballasts.

The values contained in this datasheet can change due to technical innovations. Any such changes will be made without separate notification.

Lighting Control System for Indoor Applications

Circuit diagram Extender in the Light Controller IP system



Technical details

	Extender
Ref. No.	186194
Supply voltage	220–240 V AC/DC, 0/50–60 Hz
Power consumption	6.5 W
Control input	DALI in. acc. with IEC 62386-102/-201
DALI output	max. 200 mA (expandable with the Extender)
Ambient temperature t_a	0 to 50 °C
Casing temperature t_c	max. 65 °C
Degree of protection	IP20
Protection class	II
Weight	150 g
CE requirements	EMC in acc. with EN 61547, RFI in acc. with EN 55015, Safety in acc. with EN 61347-2-11

The values contained in this datasheet can change due to technical innovations. Any such changes will be made without separate notification.

